

DESCRIPTION

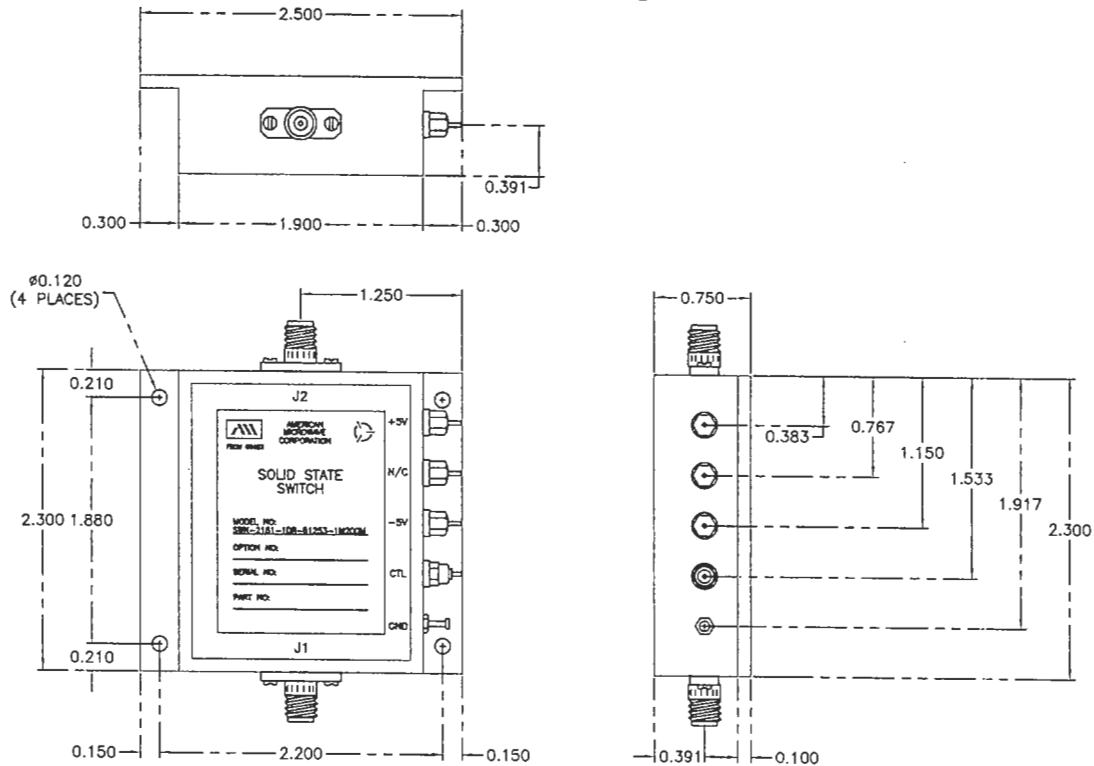
AMC MODEL SWN-2184-1DR-61253-1M200M IS A 1.0 TO 200.0 MHZ SINGLE POLE SINGLE THROW RADIO FREQUENCY TRANSMISSION SWITCH

SPECIFICATIONS

- FREQUENCY RANGE 1 MHz - 200 MHz
 - INSERTION LOSS
 - 1.0 - 10.0 MHZ 2.5 dB MAXIMUM
 - 10.0 - 50.0 MHZ 3.0 dB MAXIMUM
 - 50.0 - 200 MHZ 3.5 dB MAXIMUM
 - ISOLATION
 - 1.0 - 10.0 MHZ 95 dB MINIMUM
 - 10.0 - 50.0 MHZ 95 dB MINIMUM
 - 50.0 - 200 MHZ 80 dB MINIMUM
 - VSWR
 - 1.0 - 10.0 MHZ ON = 1.5:1, OFF = NS
 - 10.0 - 50.0 MHZ ON = 1.3:1, OFF = NS
 - 50.0 - 200 MHZ ON = 1.5:1, OFF = NS
 - RF INPUT POWER
 - 1.0 - 10.0 MHZ +7 dBm
 - 10.0 - 50.0 MHZ +7 dBm
 - 50.0 - 200 MHZ +13 dBm
- NOTE: RF INPUT LEVELS ARE FOR LESS THAN 1 dB COMPRESSION ("ON" CONDITION) AND LESS THAN 3dB DEGRADATION IN ISOLATION ("OFF" CONDITION) AT LEVELS 3 dB BELOW THOSE SHOWN
- POWER SUPPLY +5 ±0.2VDC @ 80mA MAXIMUM
-5 ±0.2VDC @ 60mA MAXIMUM
 - CONNECTORS SMA FEMALE
 - RF INPUT/OUTPUT SOLDER PIN
 - SIZE 2.50" x 2.30" x 0.75"
 - SWITCHING TIME 80 nSEC
 - LOGIC "1" SWITCH OFF
 - LOGIC "0" SWITCH ON

REVISIONS				
ZONE	REV.	DESCRIPTION	DATE	APPROVED
-	-	ORIGINAL RELEASE JOB# 121218E	02/14/02	
A	A	CHANGED SPECIFICATIONS	07/11/02	
B	B	SEE ECN #04-089	5/29/04	

MECHANICAL OUTLINE



BLOCK DIAGRAM



- NOTES:
- 1) DIMENSIONS ARE IN INCHES
 - 2) TOLERANCES: X.XX ±0.020
X.XXX ±0.010

ENVIRONMENTAL RATINGS

- TEMPERATURE -55°C TO +125°C (OPERATING)
-65°C TO +125°C (STORAGE)
- HUMIDITY MIL-STD-202F, METHOD 103B COND. B
- SHOCK MIL-STD-202F, METHOD 213B COND. B
- VIBRATION MIL-STD-202F, METHOD 204D COND. B
- ALTITUDE MIL-STD-202F, METHOD 105C COND. B
- TEMPERATURE CYCLE MIL-STD-202F, METHOD 107D COND. A

NOTE: SPECIFICATIONS WILL VARY OVER OPERATING TEMPERATURE
NOTE: THE ABOVE SPECIFICATIONS ARE SUBJECT TO CHANGE OR REVISION

PART NO.		AMERICAN MICROWAVE CORPORATION FREDERICK, MARYLAND	
APPROVALS	DATE	TITLE	
DRAWN <i>KAB</i>	02/14/02	PRODUCT FEATURE	
REDRAWN <i>JDJ</i>	8/5/04	SWN-2184-1DR-61253-1M200M RF TRANSMISSION SWITCH	
CHECKED <i>ph</i>	8/9/04	SIZE	FSCM NO.
ISSUED		A	60483
		DWG NO.	100-6259
		REV.	B
SCALE N:S		SHEET 1 of 3	